

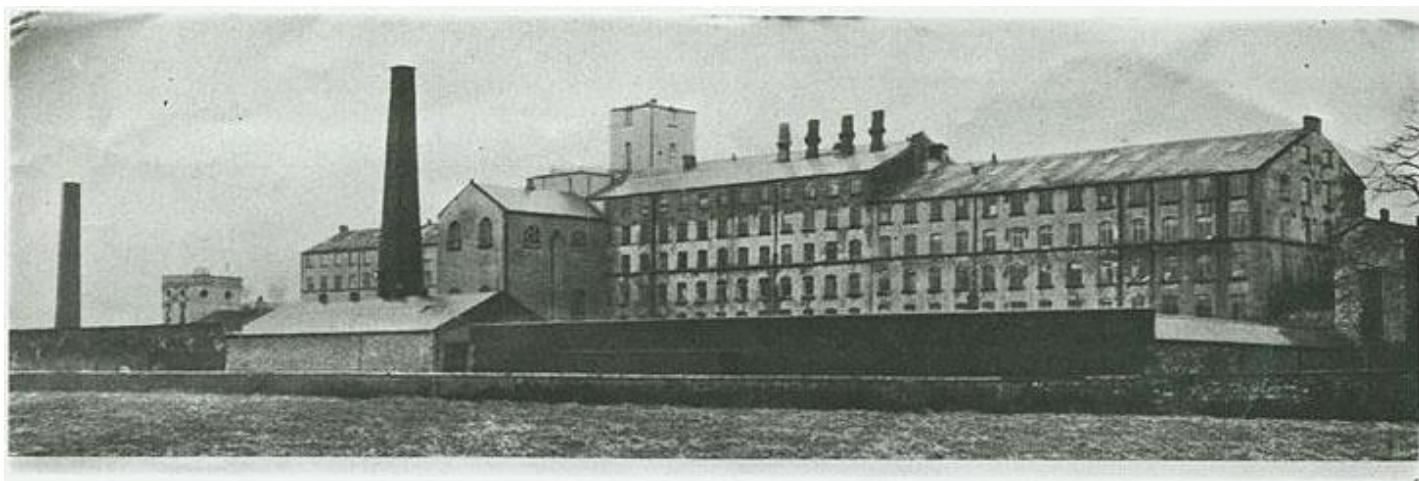
# Photographs Mill

25 September 2013 22:22

Photographs of low Moor Cotton Mill taken by the Antiquarian Society in 1964, and some comparative photographs taken by myself in 2012.

# Low Moor Mill with Chimneys Tower & Shed c1895

04 December 2011 16:24



c1895



April 2012

# Low Moor Mill Chimneys Tower & Shed Removed c1964

04 December 2011 16:26



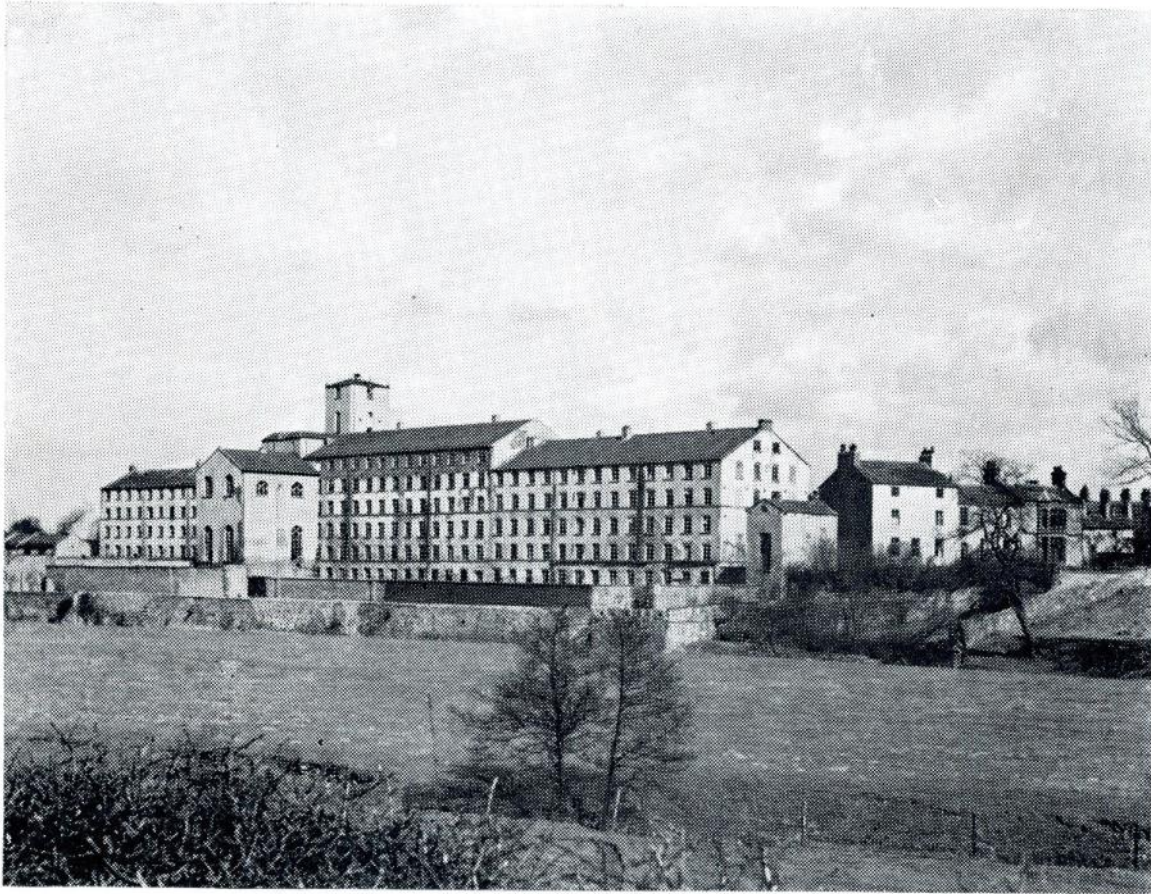
c.1964



April 2012

## Mill from South-west c1964

04 December 2011 15:46



*Fig. 5: MILL FROM SOUTH-WEST, SHOWING NORTH, CENTRE AND SOUTH SPINNING BLOCKS AND ENGINE-HOUSE OF 1894. ON THE RIGHT, AT THE SOUTH END OF THE MILL, IS THE OLD LOW ENGINE HOUSE, AND TO ITS RIGHT LOW MOOR HOUSE, WHERE WILLIAM GARNETT LIVED.*

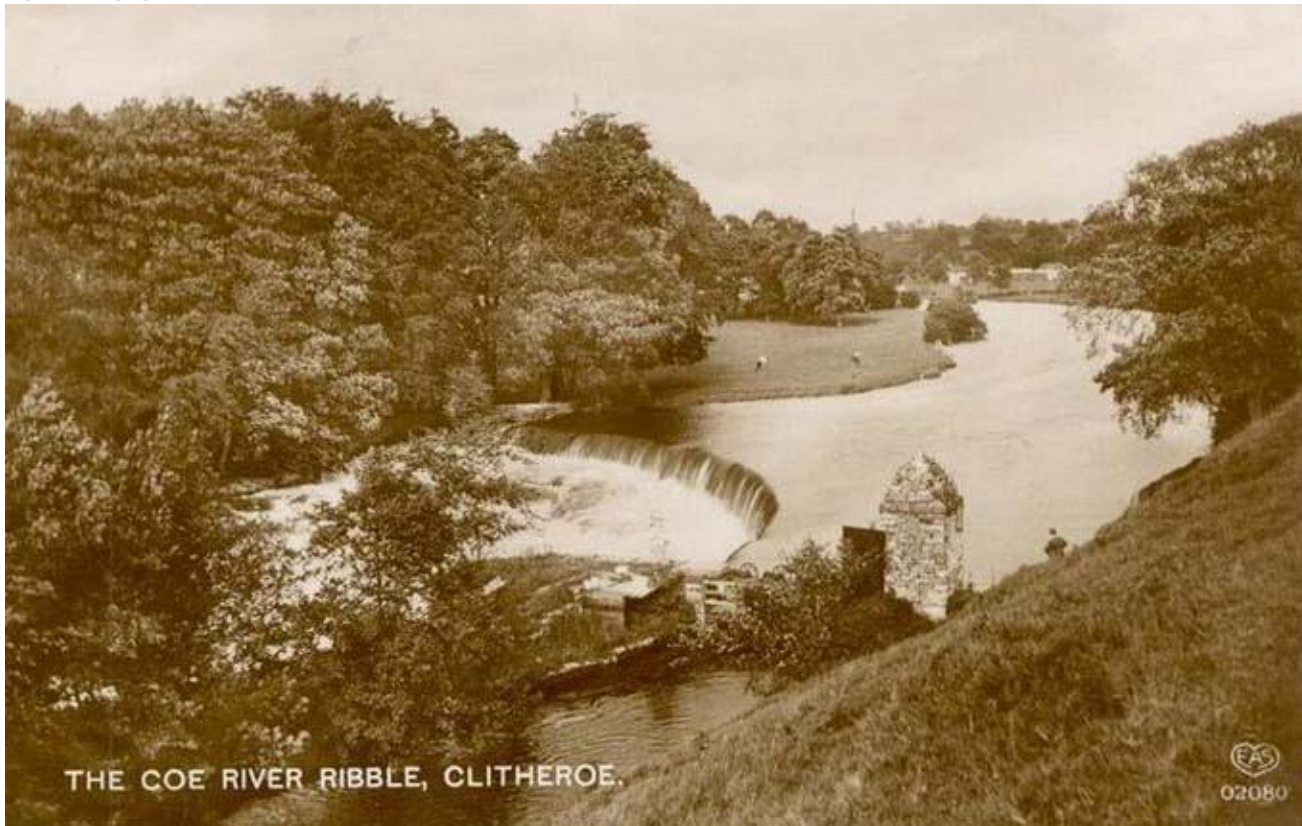
c.1964



April 2012

# The Coe (wier entrance from the Ribble for the Mill Race)

04 December 2011 18:43



THE COE RIVER RIBBLE, CLITHEROE.

EAS  
02080

# Wier on River Ribble & Entrance to Mill Race c1964

04 December 2011 15:36



*Fig. 7: WEIR ON RIVER RIBBLE AND ENTRANCE TO MILL RACE.*



# Spring Bridge Behind Mill and Crossing the River Ribble

04 December 2011 18:14



April 2012



April 2012

## Mill North & East Blocks c1964

04 December 2011 15:43



*Fig. 8: NORTH AND EAST BLOCKS, LOOKING SOUTH. NOTICE PROJECTING LATRINE TOWER IN NORTH BLOCK (right).*

# General View of yard from South-east c1964

04 December 2011 15:50



*Fig. 6: GENERAL VIEW OF YARD FROM SOUTH-EAST, LOOKING NORTH. SOUTH AND CENTRE SPINNING BLOCKS ON LEFT, EAST BLOCK ON RIGHT.*

# Low Engine House c1964

04 December 2011 15:54



*Fig. 9: LOW ENGINE HOUSE.*

# Wheel for Drive from Main Engine House c1964

04 December 2011 15:57



*Fig. 10: EAST BLOCK, LOOKING EAST, WITH WHEEL FOR DRIVE FROM MAIN ENGINE HOUSE.*

# Typical Spinning Floor c1964

04 December 2011 16:00



*Fig. 11: TYPICAL SPINNING FLOOR WITH CAST-IRON COLUMNS AND BEAMS AND BRICK ARCHES.*

# Roof Trusses c1964

04 December 2011 16:02



*Fig. 12: CAST-IRON ROOF TRUSSES, SOUTH BLOCK.*



# Interior of Weaving Shed c1964

04 December 2011

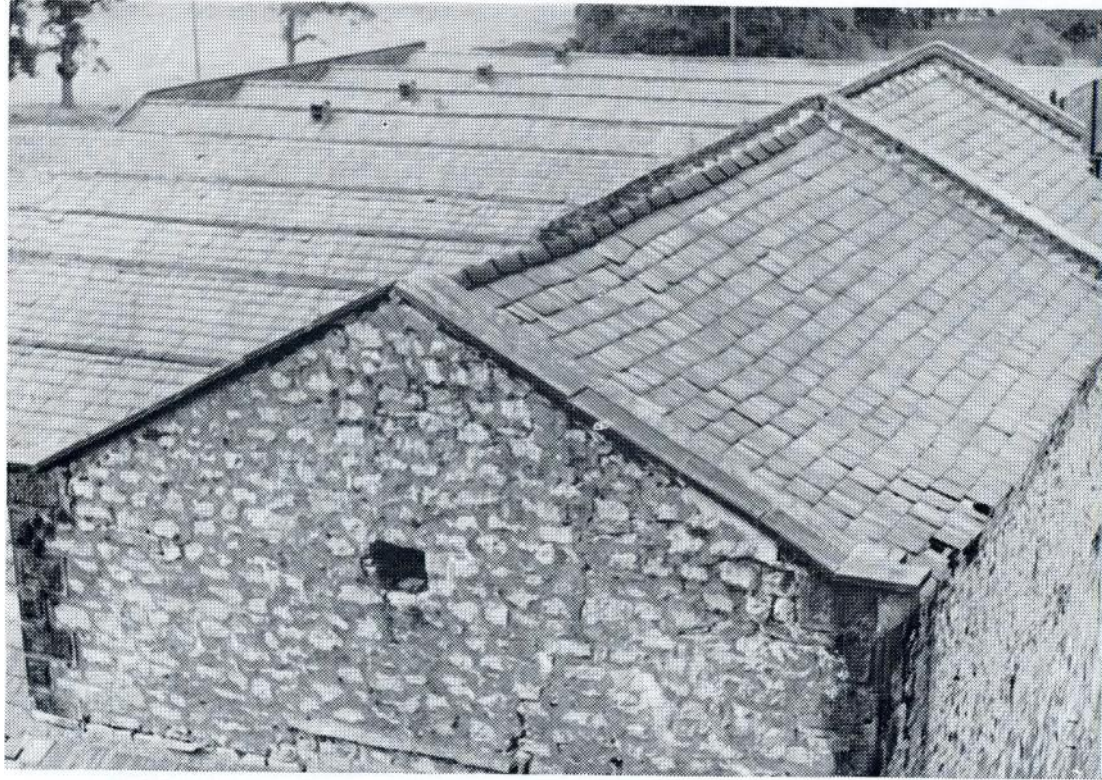
16:06



*Fig 13: INTERIOR OF WEAVING SHED (new shed).*

# New Shed & High Engine House c1964

04 December 2011 16:09



*Fig. 14: NEW SHED AND HIGH ENGINE HOUSE, LOOKING NORTH.*

# Mill Lodge

04 December 2011 18:22



# Low Moor Mill Centenary Medal 1799 to 1899

04 December 2011 18:37



# Photographs Village

25 September 2013 22:13

Photographs of Low Moor Village obtained from the internet at various dates from as early as c1900, and some comparative photographs taken by myself in 2012.

# Corner of Queen Street & Saint Pauls Street c1903

04 December 2011 17:58



c.1903



April 2012

# Junction of High Street and St. Pauls Street with Mill Lodge

04 December 2011 18:23



c.1964





April 2012

# Mill Lodge

04 December 2011 18:22



April 2012

## Back Street c1964

04 December 2011 16:15



*Fig. 17: BACK STREET (FORMERLY PITFIELD STREET), BETWEEN UNION AND NELSON STREETS.*

c.1964



April 2012

# Nelson Street c1964

04 December 2011 16:13



*Fig. 16: NELSON STREET, LOOKING EAST.*

c.1964



April 2012

# General View of Village from Upper Floor of Mill c1964

04 December 2011

16:10



*Fig. 15: GENERAL VIEW OF VILLAGE FROM UPPER FLOOR OF MILL, LOOKING EAST.*

# Saint Anne's Square c1964

04 December 2011 16:19



*Fig. 18: ST. ANNE'S SQUARE.*